



International Department, Affiliated High School of South China Normal University School Profile 2022-2023

CEEB CODE: 694293

Contact Information

International Department, Aoxiang Building,
Huafu, No.1 Zhongshan Ave. West, Tianhe District,
Guangzhou, Guangdong, PRC. 510630
Tel: 86-20-3863 0695
Fax: 86-20-3863 0696
Website: www.gdhfi.com

College Visit Availability (2022-2023)

Fall: Mid August-January
Spring: Mid February-May
Please check the above schedule, and make a
reservation with the College Counseling Center.

E-mail Contacts

Jing JIN (Yuki)
Head of College Counseling Center &
AP Coordinator
E-mail: yukijin@gdhfi.com

Xiaowei Luo (Rachel)
College Counselor
E-mail: rachelluo@gdhfi.com

School Calendar

HFI is organized on a two-semester system. The school year offers 40 weeks of instruction, from mid-August to mid-June.

Grading, Ranking & GPA Calculation

The students attending the school are of extremely high academic merit, any of whom would place in the highest tier of a typical high school. It would be misleading to rank such high achieving students. Courses in the school (both AP and non-AP) are either advanced or accelerated courses, and all gain an additional 1 point on the GPA scale.

Letter Grade	Percent	GPA
A+	97-100	4.0
A	93-96	4.0
A-	90-92	3.7
B+	87-89	3.3
B	83-86	3.0
B-	80-82	2.7
C+	77-79	2.3
C	73-76	2.0
C-	70-72	1.7
D+	67-69	1.3
D	63-66	1.0
D-	60-62	0.7
F	< 60	0

School and Community

The Affiliated High School of South China Normal University, and abbreviated as Huafu in Chinese, is located in Guangzhou, China. It was established in 1952 and is co-managed by the Ministry of Education of Guangdong Province and South China Normal University. It is widely regarded as the most prestigious and high-achieving high school in Guangdong province.

Huafu International Department (HFI), founded in 2004 and accredited by the Education Department of Guangdong Province, operates as a comprehensive three-year high school. The International Department is staffed with over 50 professionals, with teachers from the United States, United Kingdom, Australia, Canada, India and China; 70% of our teachers hold Masters degrees or higher. It is one of the most selective high school programs in South China, admitting only 10% of applicants annually.

School Mission & Vision

HFI aims to make students more self aware and self motivated, able to make difficult choices about clubs, classes, colleges, majors, careers which will help to shape them and enable them to better understand their abilities, interests and limitations. Students will develop critical and creative thinking and be able to discover and solve problems, think independently, reflect on experience and lead. They will also develop social skills and strengthen their emotional intelligence, and are encouraged to communicate directly with teachers and administrators in order to learn, understand, and seek change. Finally, students will develop strong community awareness and shoulder responsibilities as members of the community in order to understand the world around them from a broader perspective.

Curriculum

Students at HFI take part in an extensive curriculum that is strictly college preparatory in nature. HFI's curriculum is based on an American curriculum and supplemented by traditional Chinese courses, with high quality teaching, testing standards and procedures. All courses in HFI are delivered by professionally-credentialed teachers, the majority of whom are native-English-speakers. In grade 10 the students take both pre-AP courses and approved Chinese high school courses. Courses in Chinese are highly rigorous, with some like mathematics being more advanced than the AP Calculus course. In grades 11 and 12 students follow an intensive AP curriculum. English course, either Standard or AP Level, is required for all students each year. In order to expand course offerings beyond the AP curriculum, the school has added classes such as Drama, Philosophy, and Advanced Calculus, which is equivalent to a second year university calculus class.

Graduation Requirements

In order to graduate, students are required to pass three years of English, plus at least one course from each of Social Science, Science, Math and Art groups. In practice, students often enroll in twice this number of courses.

On-Campus Extra-Curricular Activities

Students at HFI participate in a diverse array of clubs, campus activities, and art festivals. Activities for this year include Campus Sports Meetings, Volunteer/Social Service, Student Council, Art Festival/Contest, National English Speech Contest, National Debate Contest, etc. There so far are 69 clubs in HFI, including Mad Science Club, Cuisine Club, American Football Club, The Voice school magazine, Finance Club, and HFI Photos Club, etc. Such activities are generally student-initiated and student-directed.

Transcript

HFI provides an English high school transcript for all enrolled students. According to the Chinese Education System, students finish their 9th grade in middle school, not high school, and our high school program is therefore grades 10 through 12. Students must submit their 9th grade transcripts when they are admitted to our program. All universities which accept documents via Parchment and Common Application can be sent securely through Cialfo.

Summary of grades for AP courses (2022)

	AP English	AP Social Science	AP Math	AP Science	AP Art
A	165	299	226	166	20
B	98	126	101	43	22
C	23	37	37	9	14
D	2	8	8	6	6
F	1	4	1	0	0

Course Offerings

AP Courses

AP English Language & Composition
 AP English Literature & Composition
 AP United States History
 AP European History
 AP World History
 AP Human Geography
 AP Psychology
 AP Macroeconomics
 AP Microeconomics
 AP Art History
 AP Calculus AB
 AP Calculus BC
 AP Statistics
 AP Computer Science A
 AP Chemistry
 AP Physics 2
 AP Physics C: Mechanics
 AP Physics C: Electricity & Magnetism
 AP Biology
 AP Environmental Science

Accelerated Courses

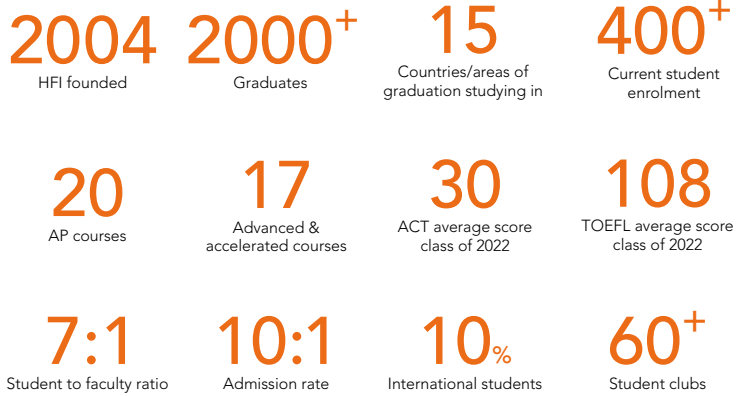
Biology in Chinese
 Chemistry in Chinese
 Mathematics in Chinese
 Physics in Chinese

Advanced Courses

Advanced Calculus
 Chinese Literature 10
 Chinese Literature 11
 Chinese Literature 12
 General English 10
 General English 11
 English 11
 English 12
 English Communication & Composition
 Film Studies
 Philosophy
 Pre-AP English
 Sociology

Other Courses

French
 German
 Spanish
 Drama
 Dance
 Pottery
 Creative Writing
 Politics in Chinese
 Geography in Chinese
 Physical Education



AP Examinations

	Total Exams	Exam Receiving 5	Exam Receiving 4	Exam Receiving 3	Exam Receiving 2	Exam Receiving 1
2017	882	408 (46%)	278 (32%)	156 (18%)	29 (3%)	11 (1%)
2018	943	498 (53%)	274 (29%)	119 (13%)	43 (5%)	9 (1%)
2019	1021	541 (53%)	261 (26%)	146 (14%)	51 (5%)	22 (2%)
2020	1012	432 (43%)	282 (28%)	182 (18%)	96 (9%)	20 (2%)
2021	1176	572 (49%)	338 (29%)	185 (16%)	64 (5%)	17 (1%)
2022	918	502 (55%)	246 (27%)	109 (12%)	45 (5%)	16 (2%)

College Application Results Class of 2012-2022

The number after a college indicates the number of students being accepted.

UNITED STATES

Art Center College of Design - 3
 Bates College - 6
 Berklee College of Music - 3
 Boston College - 56
 Boston University - 53
 Bowdoin College - 3
 Brandeis University - 40
 Brown University - 9
 Bryn Mawr College - 11
 California Institute of the Arts - 5
 Carleton College - 13
 Carnegie Mellon University - 52
 Case Western Reserve University - 40
 Claremont Mckenna College - 1
 Colby College - 5
 Colgate University - 6
 College of William & Mary - 24
 Colorado College - 8
 Columbia University - 8
 Cooper Union - 2
 Cornell University - 29
 Dartmouth College - 2
 Davidson College - 16
 Duke University - 10
 Eastman School of Music of the U of Rochester - 1
 Emerson College - 33
 Emory University - 29
 Fashion Institute of Design and Merchandising, FIDM - 3
 Georgetown University - 7
 Georgia Institute of Technology - 22
 Grinnell College - 8
 Hamilton College - 6
 Haverford College - 9
 Johns Hopkins University - 16
 Kenyon College - 14
 Lehigh University - 18
 Macalester College - 15
 Massachusetts College of Pharmacy & Health Science - 1
 Middlebury College - 9
 Mount Holyoke College - 22
 New York University - 139
 Northeastern University - 77
 Northwestern University - 10
 Oberlin College - 27
 Parsons - the New School for Design - 11
 Pennsylvania State University - 180
 Pepperdine University - 2
 Pomona College - 5
 Pratt Institute - 27
 Princeton University - 4
 Purdue University - 105
 Rensselaer Polytechnic Institute - 62
 Rhode Island School of Design - 6
 Rice University - 14
 Rose-Hulman Institute of Technology - 21
 Savannah College of Art and Design - 10
 School of the Art Institute of Chicago - 7

School of Visual Arts - 15
 Smith College - 8
 St. Louis College of Pharmacy - 1
 Stanford University - 4
 Swarthmore College - 4
 The Ohio State University - 125
 Tufts University - 18
 Tulane University - 17
 University of California, Berkeley - 28
 University of California, Davis - 285
 University of California, Irvine - 129
 University of California, Los Angeles - 59
 University of California, San Diego - 206
 University of California, Santa Barbara - 235
 University of Chicago - 23
 University of Connecticut - 42
 University of Florida - 12
 University of Georgia - 2
 University of Illinois at Urbana-Champaign - 298
 University of Miami - 38
 University of Michigan - 5
 University of North Carolina, Chapel Hill - 74
 University of Notre Dame - 8
 University of Pennsylvania - 3
 University of Pennsylvania(Wharton) - 1
 University of Richmond - 10
 University of Rochester - 57
 University of Southern California - 74
 University of Texas, Austin - 17
 University of Virginia - 48
 University of Washington - 41
 University of Wisconsin, Madison - 128
 Vanderbilt University - 24
 Vassar College - 10
 Villanova University - 5
 Wake Forest University - 21
 Washington University in St. Louis - 23
 Wellesley College - 4
 Wesleyan University - 7
 Williams College - 2
 Yale University - 4

UNITED KINGDOM

Cardiff University - 2
 Durham University - 117
 Imperial College London - 62
 King's College London - 139
 Lancaster University - 9
 London School of Economics and Political Science - 27
 Loughborough University - 3
 Queen Mary University of London - 4
 Queen's University Belfast (Medical School) - 1
 Royal Holloway, University of London - 5
 University College London - 208
 University of Bath - 5
 University of Birmingham - 9
 University of Bristol - 14
 University of Cambridge - 16

University of Edinburgh - 140
 University of Exeter - 1
 University of Glasgow - 4
 University of Leeds - 18
 University of Manchester - 114
 University of Nottingham - 4
 University of Oxford - 5
 University of Sheffield - 18
 University of St. Andrews - 85
 University of the Arts London - 6
 University of Warwick - 89
 University of York - 7

EUROPEAN REGION

Ecole hoteliere de lausanne - 9
 Ecole Polytechnique - 2
 ESCP - 3
 Esmod Paris - 1
 IE - 1
 Istituto Marangoni - 1
 Jacobs university Bremen - 1
 Les Roches International School of Hotel Management - 2
 Lomonosov Moscow State University - 1
 University of Amsterdam - 3
 University of Groningen - 1

CANADA

Carleton University - 2
 McGill University - 9
 McMaster University - 5
 Queen's University - 8
 Simon Fraser University - 4
 University of Alberta - 3
 University of British Columbia - 48
 University of Ottawa - 6
 University of Toronto - 166
 University of Waterloo - 16

ASIAN REGION

Hong Kong University of Science and Technology - 22
 Israel Institute of Technology - 1
 Korea University - 1
 Macao Polytechnic Institute - 2
 Nanyang Technological University - 7
 National University of Singapore - 6
 The Chinese University of Hong Kong - 21
 The Hong Kong Polytechnic University, PolyU - 8
 The University of Hong Kong - 29
 Tsinghua University - 2
 Waseda University - 1
 Yale-NUS College - 3

AUSTRALIA

Australian National University - 1
 University of Melbourne - 10
 University of New South Wales - 20
 University of Sydney - 146